

FROM ATC permit packet for SomoVillage/Resynergi's Facility # 203504
Explanation of Permit CA002 04092024.pdf

LEARN MORE
Demanding Priority of
Public Safety and Health,
Halt Permitting Plastic
Pyrolysis Facility



<https://www.rohnertparkincinerator.com/>

Facility Information

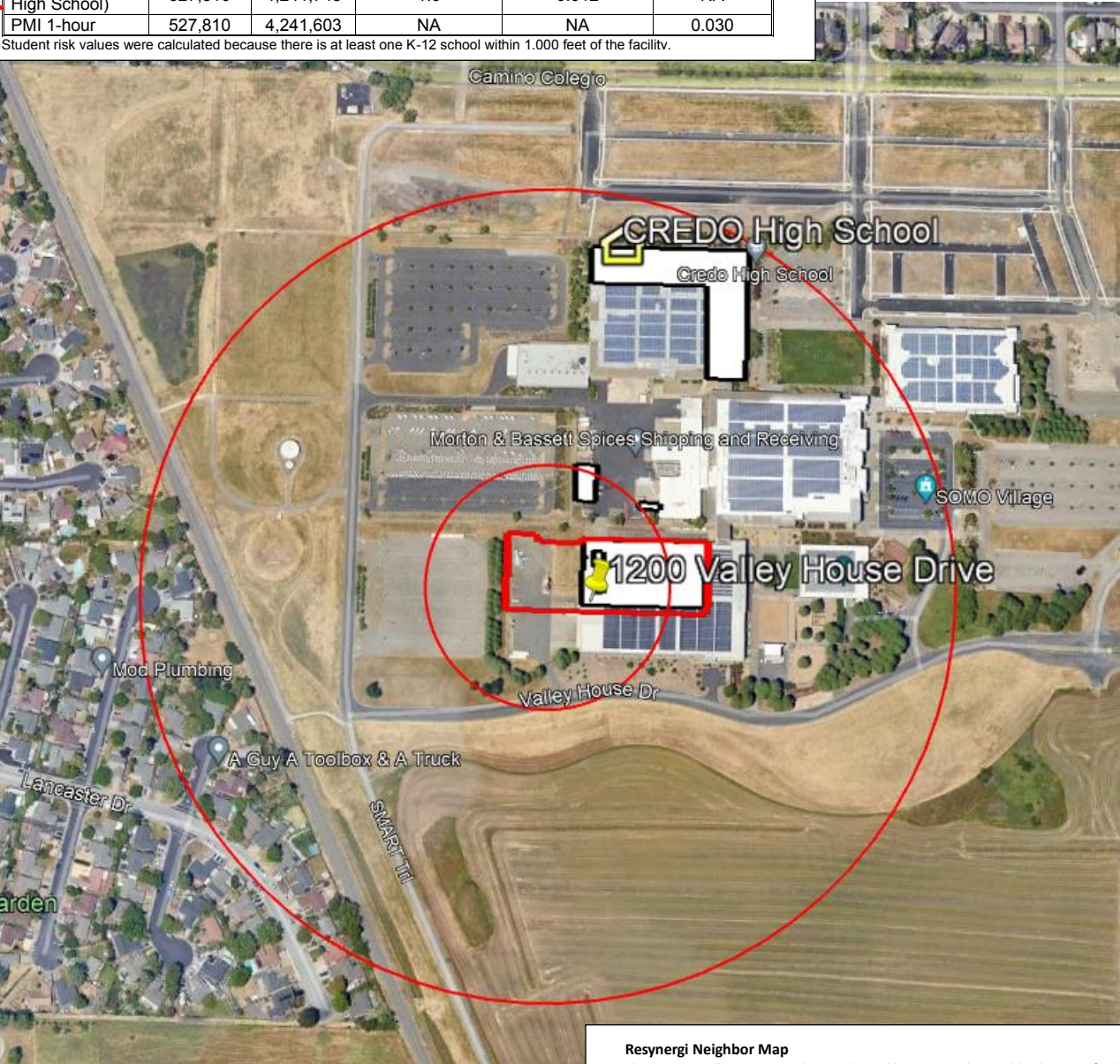
This is a first of it's kind unit. Resynergi's 5 TPD system is the first production model, so all process information is inferred from either similar systems or pilot testing of the 1.25 TPD prototype unit. Our CMAP system is in the process of contract manufacturing... new production unit., it's never been constructed before. As such, we have no source testing information on commercial steady run rates emission.

Subject: Results of Health Risk Assessment (HRA) for CA-002 Somo Village (Rohnert Park, CA), Facility #203504, Application #704470

Health Risk Summary

Receptor	NAD 83 UTM Coordinates (meters)		Cancer Risk (in a million)	Chronic HI	Acute HI
	Easting (x)	Northing (y)			
Resident	527,710	4,242,003	2.3	0.0034	NA
Worker	527,830	4,241,563	6.9	0.10	NA
Student (Credo High School)	527,810	4,241,743	1.3	0.012	NA
PMI 1-hour	527,810	4,241,603	NA	NA	0.030

Student risk values were calculated because there is at least one K-12 school within 1,000 feet of the facility.



Resynergi Neighbor Map

The Sonoma Village is a mixed-use industrial business park Zoned by the City of Rohnert Park as light manufacturing and industrial park. Figure 2. The property is zoned 'Light Manufacturing and Industrial' by the City of Rohnert Park. The closest school, Credo High School at 1500 Valley House Drive is 635 feet from the facility flare (P-1) in a Northern direction. The closest residence property line is a single-family home 820 feet West of the facility. The facility is surrounded by the Sonoma Village mixed use industrial park and undeveloped fields designated as mixed use zones. See Figure 2, Facility Neighbor. In Figure 1, the inner red ring is the 300-foot radius from the flare stack. The outer ring is the 1,000-foot